

# SmartLock® Pro Plus

ACCESS CONTROL SYSTEM



Pro Plus is also available with an integrated version of HID's Asure ID photo badging software.

## Simple Dependable Versatile

A simple yet powerful access control solution for up to 4800 users and 120 doors - cutting edge simplicity at its best! The software can be mastered in under an hour and is so intuitive that little or no training is required. Also, Pro Plus includes software to make managing your DSC alarm panels a breeze. Pro Plus stores cardholder and history data in MS Access or SQL tables for ease of integration with other systems.

A wide range of door kit configurations are available, from a simple single door controller to complete one, two, or three-door kits which include everything you need for a complete solution such as: communication device, readers, power supply, enclosure and access cards.

# SmartLock® Pro Plus

## ACCESS CONTROL SYSTEM

### SMARTLOCK® PRO PLUS SOFTWARE (CA-SLSWPP)

With a variety of scheduling, tracking and audit features, SmartLock® Pro Plus software makes security simple.

The screenshot displays the SmartLock Pro Plus software interface. The main window is titled 'Reader View - Smartlock Pro Plus' and features a menu bar (File, Edit, Commands, View, Badging, Help) and a toolbar with icons for New, Edit, Delete, Unlock, Temp, Rlock, Lockout, Lockoutoff, Download, and CstedTime. A secondary toolbar includes 'Launch Central Alarm System Manager' and 'Icon View'. The interface is divided into several panes: a left sidebar with icons for Event, Reader, User, Access Schedule, Profile, Unlock Schedule, Holiday, History, Alarm, and Task; a central area with a grid showing red and green blocks; and several floating windows for editing user profiles, access schedules, and holiday calendars.

- Event** » View real-time transactions transmitted to and received from SmartLock® Pro Plus door control panels.
- Reader** » Add, edit and delete readers. Initiate unlock, relock, lockout and download commands.
- User** » Add, edit and delete cardholders.
- Access Schedule** » Modify any of the thirty (30) access schedules used to specify access times.
- Profile** » Add, edit and delete profiles. Profiles are templates that define reader access privileges.
- Unlock Schedule** » Modify any of the sixty (60) unlock schedules used to specify automatic unlock times.
- Holiday** » Modify any of the sixty (60) holidays. Holiday access is specified in profiles.
- History** » View historical transactions stored on the PC's hard drive. Run basic queries.
- Alarm** » View and acknowledge alarms such as Forced Entry and Door Held Open.
- Task** » View and schedule tasks that will execute at specified times.

### SMARTLOCK® PRO PLUS SOFTWARE WITH PHOTO BADGING (CA-SLSWPPB)

#### COMPATIBLE PRINTER LIST FOR SMARTLOCK® PRO PLUS PHOTO BADGING

- All FARGO DTC & HDP Printer/Encoders
- Datacard Card Printers
- Nisca Card Printers
- DIS Card Printers
- Zebra Card Printers
- Evolis Card Printers



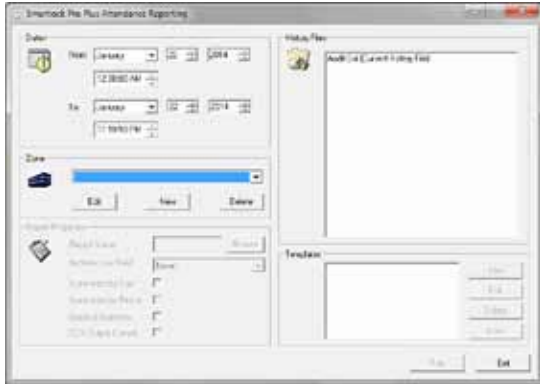
# SmartLock® Pro Plus

## ACCESS CONTROL SYSTEM

### OPTIONAL SOFTWARE ADD-ONS

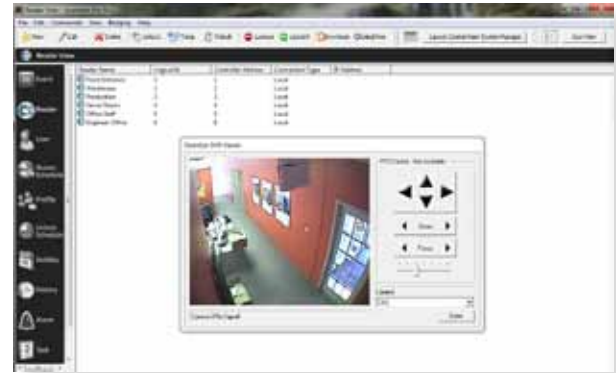
#### ENHANCED ATTENDANCE REPORTING (CA-ARSWP)

Enhanced Attendance Reporting software enables SmartLock® Pro Plus to generate reports based on zones that identify entry and exit points to a building or facility area and operator-specified dates and times. It allows the user to create Templates that can be used in the SmartLock® Pro Plus software to set up Tasks, allowing for scheduled, recurring report generation.

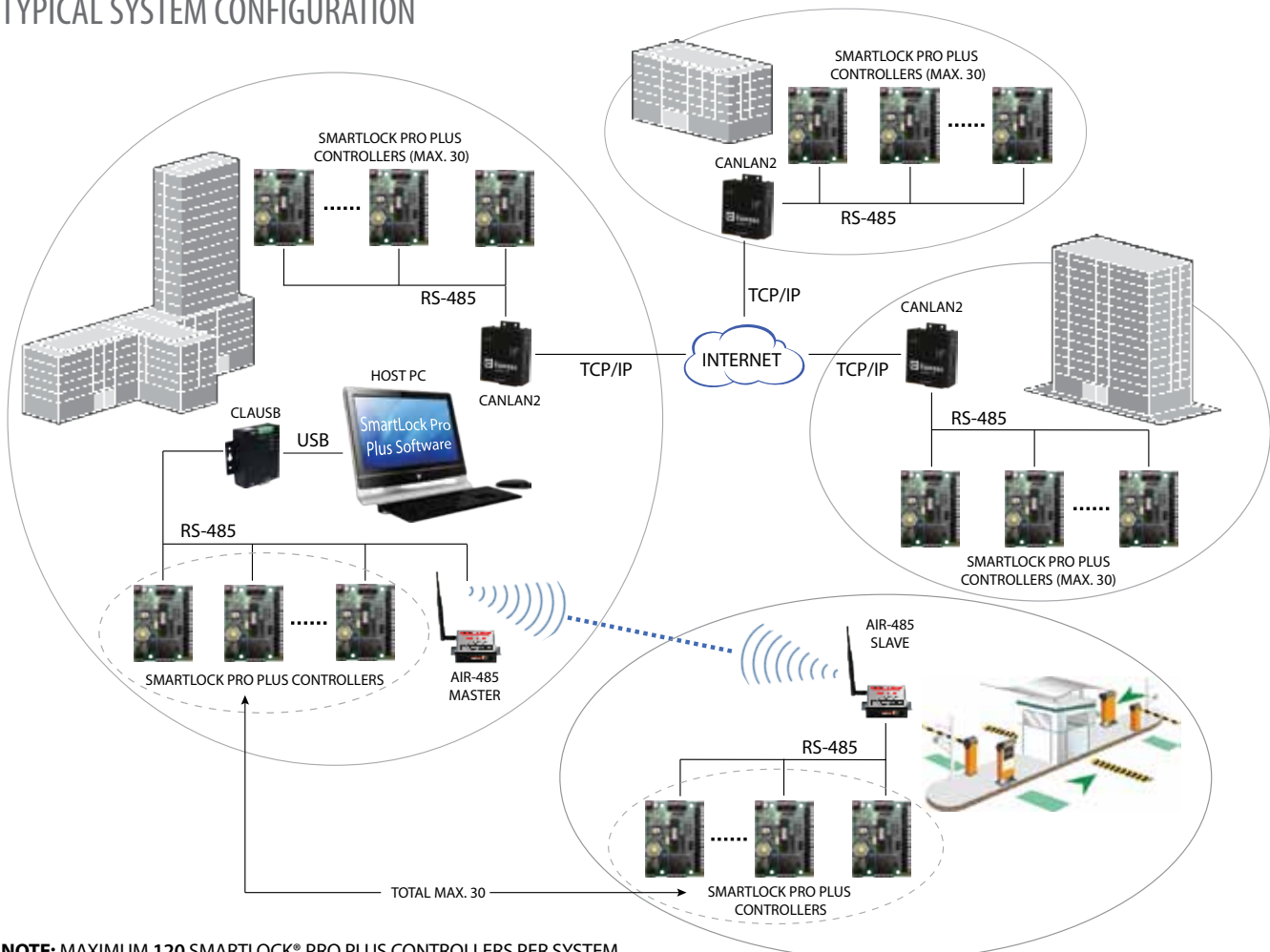


#### OPEN EYE DVR/ PANASONIC NVR INTEGRATION

- Open Eye DVR for SmartLock® Pro Plus (CA-OESW)
- Panasonic ND300 NVR for SmartLock® Pro Plus (CA-PAND300SW)
- Panasonic ND400 NVR for SmartLock® Pro Plus (CA-PAND400SW)



### TYPICAL SYSTEM CONFIGURATION



**NOTE:** MAXIMUM 120 SMARTLOCK® PRO PLUS CONTROLLERS PER SYSTEM

# SmartLock® Pro Plus

## ACCESS CONTROL SYSTEM

### FEATURES & BENEFITS

- Cost-effective, entry-level system using single-door controllers
- Intuitive software can be learned within 30 minutes
- 120-door and 4,800-cardholder capacity
- Available with an integrated version of HID's Asure ID photo badging software
- Optional software add-ons include NVR/DVR Integration and Enhanced Attendance Reporting
- Controller outputs for Electric Lock, Handicap Door Operator and Forced Entry/Door Held Open
- Controller inputs for Request-to-Exit button and door contact

### CONTROLLERS

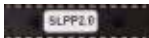
#### SmartLock® Pro Plus Controller



Supports a single door with entry and exit readers, and up to 4,800 users. Provides relay output for lock control, handicap door operator, door-held-open, and forced entry. Supports inputs for request-to-exit button and door contact. Buffers up to 1,000 transactions. Requires 12 VDC. Includes stand-offs.

CA-SLPCNPP

#### SmartLock® Pro Plus Firmware Upgrade



SmartLock Pro Plus software is NOT compatible with Pro firmware. Upgrade chips allow existing SmartLock Pro controllers to operate with the SmartLock Pro Plus software. One chip required per controller.

CA-SLPPFW

#### SmartLock® Enclosure



9.5" x 13" x 3" metal enclosure with room for 1, 2 or 3 SmartLock Pro Plus controllers, Cansec power supply and 12V 7AH battery. Now comes with key lock and CanLan2 mounting location.

CA-SLBOX

### NEW STANDARD FEATURES



#### Pro Plus Photo View

Displays cardholder photos when their card is used at all or selected readers.

#### Pro Plus Audit View

Allows users on remote computers to view the real time audit transactions.

#### Pro Plus User Management

Allows Personnel or Human Resources departments to add and delete users from the SmartLock Pro Plus system.

### COMMUNICATIONS DEVICES

#### USB Serial Communications Device



RS-485 to USB Converter. Supports up to 30 SmartLock Pro Plus controllers.  
CA-CLAUSB

#### CanLan II Network Communications Device



RS-485 to LAN communication device. Includes plug-in power supply, UTP jack, and RS-485 output. *Static IP is required.*  
CA-CANLAN2

#### Wireless AIR-485™ Communications Device



Wireless RS-485 communications manufactured by Cansec for use with **any product** using 2-wire RS-485. The AIR-485™ is perfect for installations where wired connections are cost prohibitive. Configured using simple DIP switch settings.  
CA-AIR485

Please go to [cansec.com](http://cansec.com) for all available SmartLock Pro Plus door kits, and [cansec.com/downloads](http://cansec.com/downloads) for complete documentation, software and drivers.

### SPECIFICATIONS (CONTROLLER)

Size	65 mm (w) x 85 mm (l) x 16 mm (d) [2.6 in (w) x 3.3 in (l) x 0.6 in (d)]
Weight	70 g (2.5 oz)
Operating Temperature	-35°C to 70°C (-22°F to 158°F)
Power Requirements	12 VDC, 50 mA (Controller only)
Warranty	5 years
Country of Origin / Manufactured	Canada

