

# Faac City 220 Automatic

The FAAC City 220 Automatic concealed traffic bollard, is the version built for residential use, when a limited number of daily transits (about 60 manoeuvres/day) are expected. It can be activated automatically by commands given by authorised persons (cards, remote-controls, etc.) or by automatic commands operating at set times (hourly programmer). The device has double effect pneumatic activation, with an external drive station.

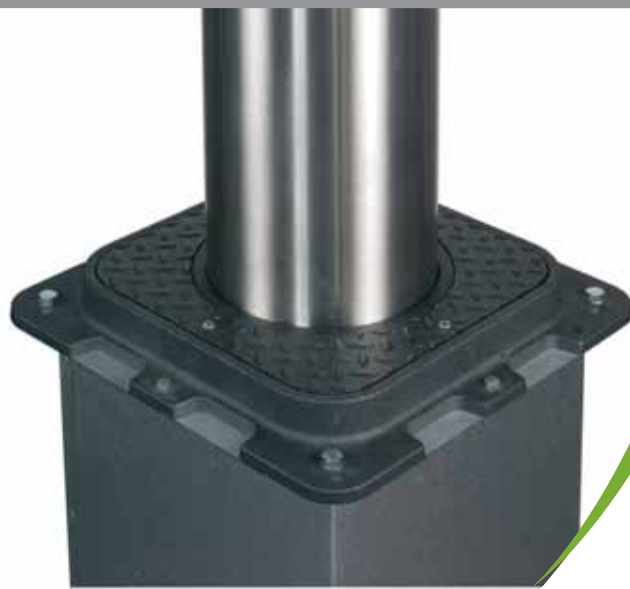


## DESCRIPTION Available versions

FAAC CITY 220 H600 Painted steel, automatic  
(cylinder in Fe37 steel, standard painted RAL7021 dark grey metallised)

FAAC CITY 220 H600 Painted steel, automatic (cylinder in AISI 304 stainless steel, standard painted RAL7021 dark grey metallised)

FAAC CITY 220 H600 Stainless steel, satin finish, automatic  
(cylinder in satin finish AISI 304 stainless steel)



# Faac City 275 Automatic

The FAAC City Automatic concealed traffic bollard is advisable when many transits per day are expected. It can be activated automatically by commands given by authorised persons (cards, remote-controls, etc.) or by automatic commands operating at set times (hourly programmer). The device has double effect hydraulic activation, with a drive station.



## DESCRIPTION Available versions

FAAC CITY 275 H600 automatic  
(cylinder in Fe37 steel, 6 mm thickness, standard painted dark grey RAL7021 metallised)

FAAC CITY 275 H800 automatic  
(cylinder in Fe37 steel, 6 mm thickness, standard painted dark grey RAL7021 metallised)



# Faac City K Antiterrorism Automatic

Available only in the Automatic version, it stands out for its extremely high anti break-in resistance. This traffic bollard was specifically designed to meet increasingly frequent security requirements. Its applications include creating protective barriers or allowing access to particularly sensitive zones such as: Embassies, Consulates, Public Offices, Banks, etc. Impact by a vehicle against the cylinder of the K 275 H700 concealed bollard can produce two types of deformation: elastic and permanent. Elastic deformation: 9,000 Joules. FAAC CITY continues to operate and the safety devices are guaranteed. Permanent deformation: 630,000 Joules (partial or total breakage of the concealed traffic bollard).



## DESCRIPTION Available versions

FAAC CITY K 275 H700 automatic  
(cylinder in Fe510 steel, 10 mm thickness, standard painted dark grey RAL7021 metallised)

